

Activity 7: Catchments to Coasts Teachers Guide

Answers to Discussion Questions:

1. Make a list of materials that could be carried by water that may have a harmful effect when in a Marine National Park or Marine Sanctuary

Any materials that can be transported by water can make their way from catchments to the sea. These include soils, litter, animal wastes, oils, and many dissolved materials such as nutrients and pesticides.

2. List 5 different ways that you can stop these materials entering our waterways and help care for the sea at home.

There are many ways on which these materials can be prevented from entering waterways. These include:

- *Putting rubbish in a bin*
- *Picking up dog poo*
- *Growing trees and plants on waterways to prevent erosion.*
- *Reducing the use of chemical fertilisers and replacing them with compost*
- *Installing litter traps*
- *Using wetlands to filter runoff*
- *Protecting soil from erosion on farms*

Marine Mapping Education Resource Kit

Activity 7 – Catchments to Coasts

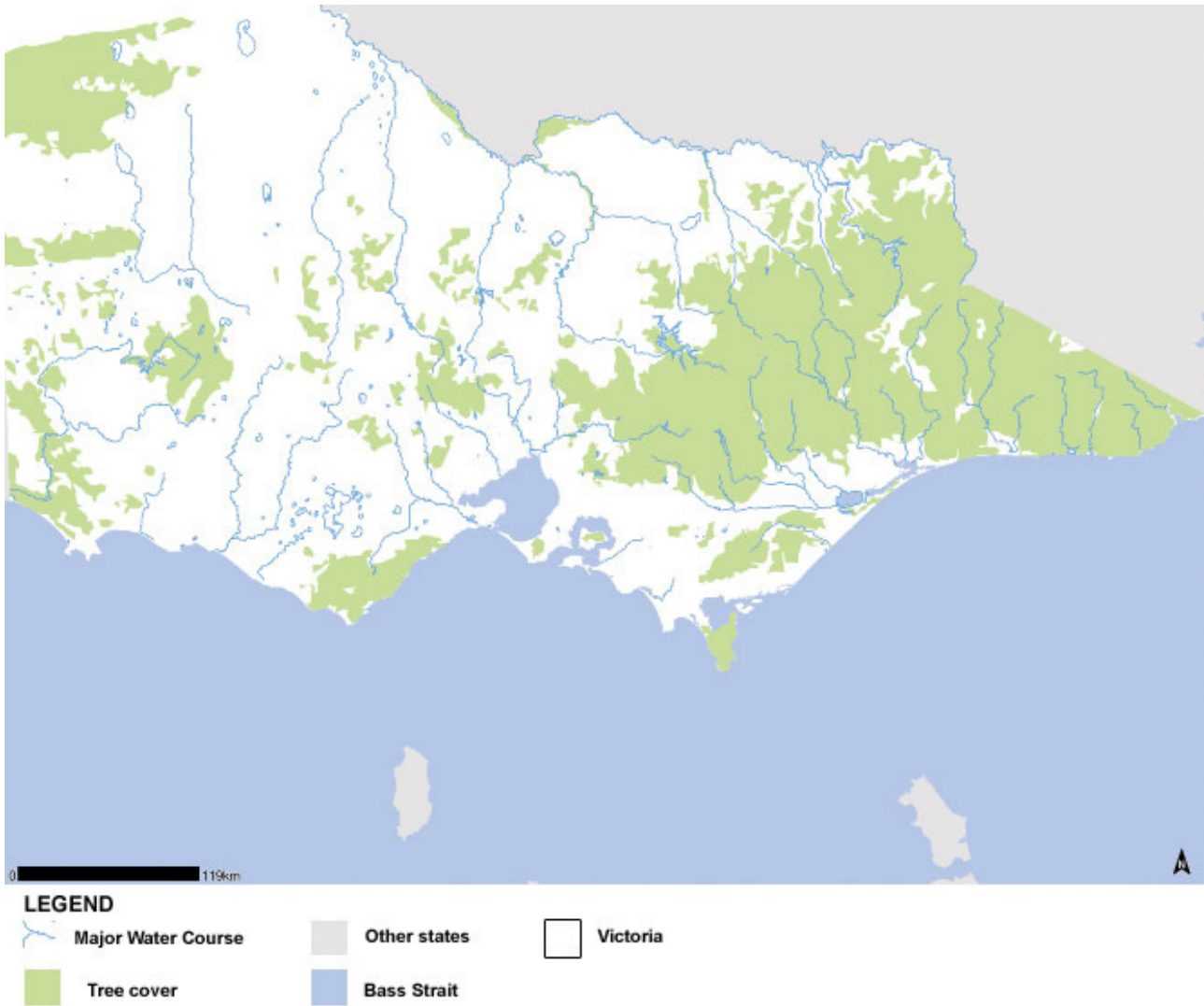


Figure 1: Victoria's Rivers and Streams

For more information call the Parks Victoria Information Centre on 13 1963
or visit our website - www.parkweb.vic.gov.au