

## 5. Fauna of Kinglake National Park

### Aim

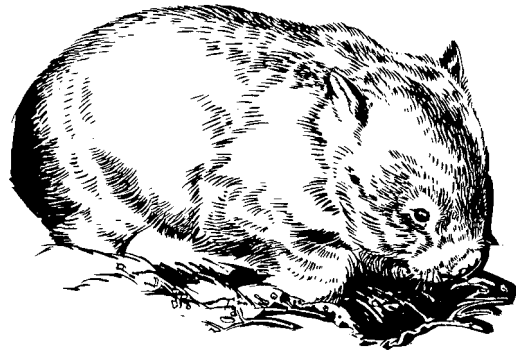
To familiarise students with the main mammals, birds, reptiles, amphibians and fish found in Kinglake National Park. Even though students may not sight any of these on their field trip, they will be able to make judgements about habitat needs and conservation management strategies for these species.

### Materials

Resource sheet 5: Fauna of Kinglake National Park.

### Activities

1. Read the resource sheet on fauna and complete the table below.
2. Complete column 2 in the table below by writing in the number of mammal, bird, reptile, amphibian and fish species found in Kinglake National Park. List the names of one to five notable species in column 3. List the pest animal species found in the park in column 4. The last column will be completed during your fieldwork.
3. Write a brief concluding paragraph outlining what types of animals are found in Kinglake National Park.
4. List the food and habitat requirements for a) a Lyrebird, b) a Common Wombat, c) a Powerful Owl.
5. What food or habitat requirements do any of these animals have in common?
6. Create a food web for Kinglake National Park involving a lyrebird. Create another food web involving a wombat. Create a third food web involving a Powerful Owl.
7. What plant and animal species are part of more than one of the above food webs?



Common Wombat © MT

	Total number identified in KNP	Notable species in KNP	Pest animals on KNP	Field notes/ Date
Mammals				
Birds				
Reptiles				
Amphibians				
Fish				

## 5. Animals of Kinglake National Park

Kinglake National Park is home to a large variety of bird, mammal and reptile species. However many of the animals are hard to see as most are nocturnal, particularly the mammal species. Wombats, wallabies, koalas, possums, gliders and bats are just some of the nocturnal mammal species found in the park.

### Mammals

Thirty-six native species have been recorded in the park. They include the Eastern Grey Kangaroo, Swamp Wallaby, Brush-tailed Possum, Common Ring-tailed Possum, Feathertail Glider, Sugar Glider, Greater Glider, Yellow-bellied Glider, Common Wombat, Long-nosed Bandicoot, Brown Antechinus, Dusky Antechinus, White-footed Dunnart, Swamp Rat, Water Rat, Short-beaked Echidna, Platypus, and a number of bats. Several hundred koalas have been reintroduced into the park since 1970 after having been almost totally wiped out during wildfires in 1926 and 1939.



Brown Antechinus © MT

The Brush-tailed Phascogale occur in the park: their status in Victoria is vulnerable. The Tiger Quoll is present and its status in Victoria is endangered. A sighting of a Tiger Quoll was made in the park in 2002!

Eight introduced mammals are found in the park: Black Rat, House Mouse, fox, cat, rabbit, feral pig, feral goat, feral dog.

Clear felling of Mountain Ash in the forests of the Kinglake area reduces the habitat of tree dwelling species which rely on tree hollows for nesting sites. It is likely that Kinglake National Park has become a refuge for the recolonisation of nearby disturbed forests and so the park is important in maintaining diversity in the area.

### Birds

There have been 182 species of birds listed for Kinglake National Park.

Important species include Brush Bronzewing, Wedge-tailed Eagle, Peregrine Falcon, Powerful Owl, Tawny Frogmouth, Brush Cuckoo, Superb Lyrebird, Rufous Fantail, Satin Flycatcher, Pink Robin, Spotted Quail Thrush and Pilot Bird.



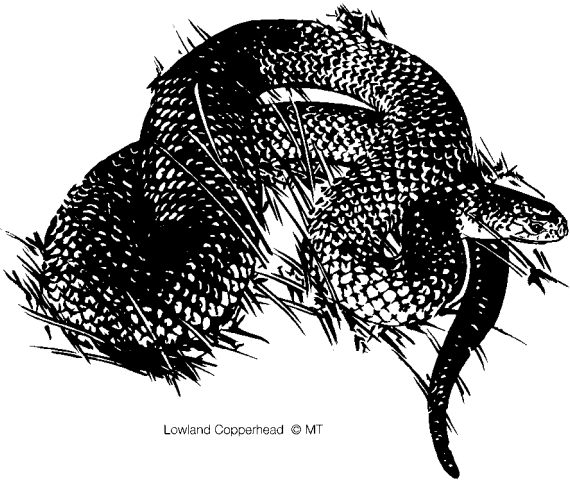
Powerful Owl © MT

Introduced bird species include, House Sparrow, Common Starling, Common Blackbird, Common Mynah, European Goldfinch, and Green Finch.

## Reptiles

Twenty- five species of reptiles at Kinglake National Park.

These include Tree Goanna, Mountain Dragon, Marbled Gecko, Delicate Skink, Grass Skink, Black Rock Skink, Blotched Blue Tongue, Common Blue Tongue, Lowlands Copperhead, Eastern Small-eyed Snake, White-lipped Snake, Tiger Snake, Red-bellied Black Snake.



Lowland Copperhead © MT

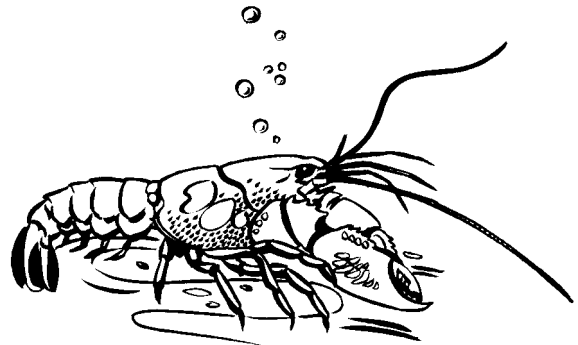
## Amphibians

Twelve species of frog have been found in the park including the Southern Brown Tree Frog and the Growling Grass Frog.

## Fish and other aquatic fauna

Broadfin Galaxias, whose status in Victoria is rare, is found in the park. Mountain Galaxias and River Blackfish are also present. Yabbies, freshwater Crayfish and Freshwater Mussels have been found.

The presence of a large population of introduced Brown Trout in Arthur's Creek at the park boundary has almost eliminated the native Mountain Galaxias and contributed to the elimination of the Broad-finned Galaxias. Populations of Mountain Galaxias have also been recorded in the head waters of Diamond and Jehosaphat Creeks on the south side of the Divide and Hirts Creek to the north. These populations of regionally rare fish require monitoring.



Yabbie © MT