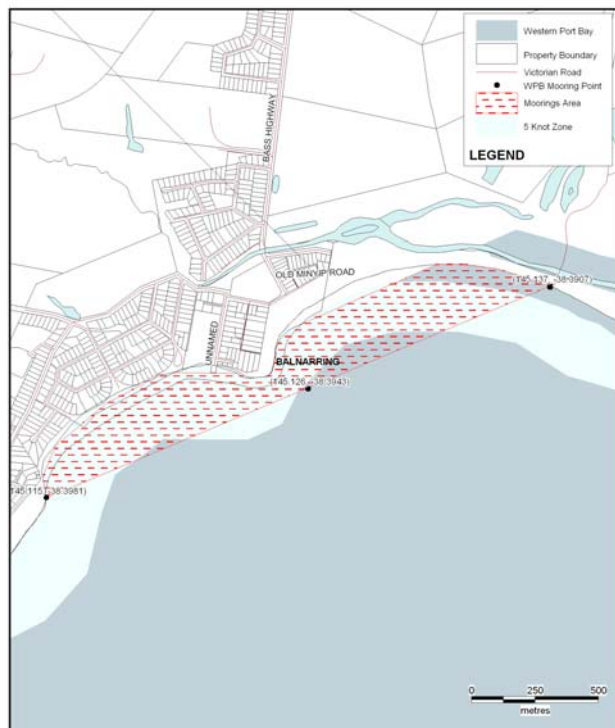


Annual Mooring Ground Information Balnarring

Mooring Location	Balnarring
Set Aside Name	Balnarring
Melways Reference	Map 612 M10
Boundaries	An area approximately 250 metres seaward south along the Balnarring foreshore extending 2.4kms directly seaward of the Balnarring Yacht Club
Agent Managing	Parks Victoria
Status	No sites available at the Balnarring Western Mooring Ground.
Waiting List	No
Local Features	No boat ramp access. Car parking available at Yacht Club and foreshore parking.
Public Moorings present	No
Availability of Temporary Moorings	No
Weather Conditions	Exposed to SSE and SW winds. Sheltered waters NNW winds.
Tackle Requirements	Buoys : Identification buoys are to be attached to the mooring at all times and the site ID number must be clearly visible and marked on both buoys. Two buoys are required one being an inflatable type (orange in colour) of no less than 600mm in diameter with the other pick up buoy with handle attached to carry the ID tag.
	Chain : As specified by works contractor
	Weights : Ground weights permitted

Tender Arrangements	Tenders not permitted to moor but can remain on mooring whilst mother vessel is at sea.
Access	No boat ramp access. Car parking available at Yacht Club and foreshore parking.
Contact:	Contact Parks Victoria on 13 19 63



© 2004 Parks Victoria Commercial Services Division

Map 109: Balnarring
Western Port Bay Mooring Areas

Map 1 of 1



Healthy Parks
Healthy People





Map Produced using Parks Victoria's ParkView Mapping System
Date Produced: 20 June 2006

GEOCENTRIC DATUM OF AUSTRALIA – (GDA94)
STATE DIGITAL MAPBASE USED WITH PERMISSION OF
LAND VICTORIA,
DEPARTMENT OF SUSTAINABILITY AND ENVIRONMENT.
This map supercedes all previous editions.



Annual Mooring Grounds
Balnarring

Healthy Parks
Healthy People

