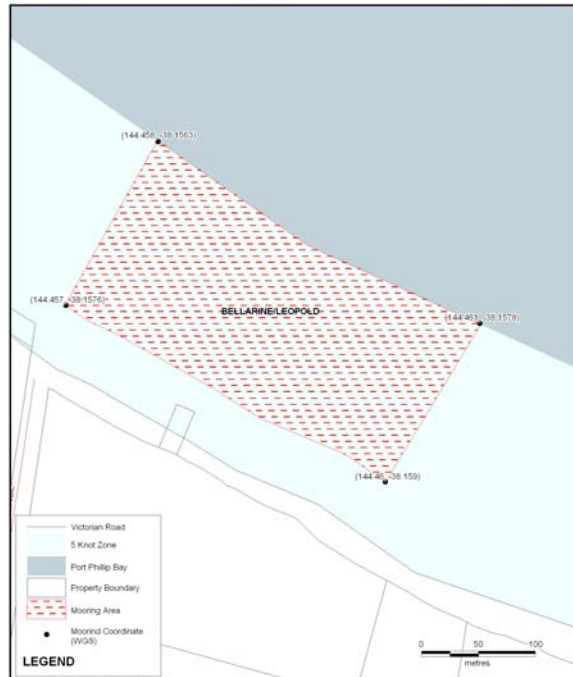


Annual Mooring Ground Information Bellarine/Leopold

Mooring Location	Sea Brae Boat Owners Club – Pelican Shores Caravan Park
Set Aside Name	Bellarine / Leopold
Melways Reference	Edition 31 2004 Map 454 D 7
Boundaries	See set aside map below for GPS co ordinates to the boundaries for this mooring ground.
Agent Managing	Sea Brae Boat Owners Club
Status	Contact the Sea Brae Boat Owners Club for information on availability.
Waiting List	Contact the Sea Brae Boat Owners Club for information on availability.
Local Features	Pelican Shores Caravan Park
Public Moorings present	NO
Availability of Temporary Moorings	Nil
Weather Conditions	Open Water North, West and East winds generally protected from South
Tackle Requirements	Buoys : As detailed in the mooring tackle specifications guidelines outlined by Parks Victoria.
	Chain : As detailed in the mooring tackle specifications guidelines outlined by Parks Victoria.
	Weights : Concrete Blocks or Train Wheels permitted. Parks Victoria specifications must be adhered to.
Tender Arrangements	Contact the Sea Brae Boat Owners Club for information on availability. Tender moorings generally available in shallows.

Access	Access by car via Clifton Avenue. Boat Ramp located within the Pelican Shores Caravan Park provides an access point for vessels. However ramp may only be satisfactory at high tide due to shallow nature of water.
Contact:	Contact the Sea Brae Boat Owners Club on 1800 816 429.



Map 29: Bellarine/Leopold
Port Phillip Bay Mooring Areas
Map 1 of 1
19 July 2004
Parks VICTORIA



Healthy Parks
Healthy People





Map Produced using Parks Victoria's ParkView Mapping System
Date Produced: 20 June 2006

GEOCENTRIC DATUM OF AUSTRALIA – (GDA94)
STATE DIGITAL MAPBASE USED WITH PERMISSION
OF LAND VICTORIA,
DEPARTMENT OF SUSTAINABILITY AND
ENVIRONMENT.
This map supercedes all previous editions.



Annual Swing Mooring Grounds
Bellarine/Leopold

Healthy Parks
Healthy People

