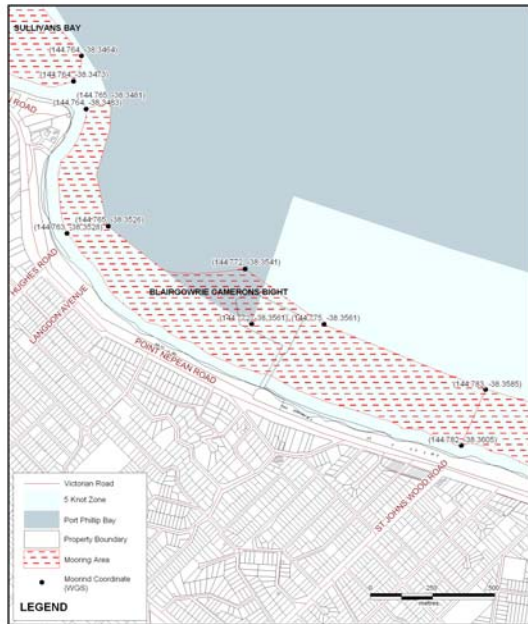


Annual Mooring Ground Information Blairgowrie

Mooring Location	Blairgowrie
Set Aside Name	Blairgowrie Yacht Squadron
Melways Reference	Page 167 E1
Boundaries	The Blairgowrie Yacht Squadron manage 350 annual moorings on behalf of Parks Victoria. Contact the Blairgowrie Yacht Squadron for details on mooring ground boundaries.
Agent Managing	Blairgowrie Yacht Squadron
Status	Contact Blairgowrie Yacht Squadron
Waiting List	Contact Blairgowrie Yacht Squadron
Local Features	Blairgowrie Marina and the Blairgowrie Yacht Squadron are located within close proximity to the mooring ground.
Public Moorings present	NO
Availability of Temporary Moorings	NO
Weather Conditions	Open water exposed to all winds especially N and W winds.
Tackle Requirements	Buoys : Identification buoys are to be attached to the mooring at all times and the site identification number must be clearly visible. Buoys can either be polystyrene or plastic foam filled (minimum of 300mm diameter to a maximum of 500mm). Alternatively a 200mm manufactured stick buoy will be accepted.
	Chain : As specified by works contractor.

	Weights : No ground weights permitted.
Tender Arrangements	Tenders (that service larger vessels on swing moorings), that are moored in shallow water or at an approved non-berthing section of a public jetty, are required to show the identification of the registered vessel on the outside structure of the tender vessel.
Access	Parking available along Pt Nepean Rd.
Contact:	Contact the Blairgowrie Yacht Squadron Ph: (03) 5988 8453



Map 14: Blairgowrie
Port Phillip Bay Mooring Areas
19 July 2004
Map 1 of 1
Parks VICTORIA



Healthy Parks
Healthy People





Map Produced using Parks Victoria's ParkView Mapping System
Date Produced: 4 July 2006

GEOCENTRIC DATUM OF AUSTRALIA – (GDA94)
STATE DIGITAL MAPBASE USED WITH PERMISSION OF
LAND VICTORIA,
DEPARTMENT OF SUSTAINABILITY AND
ENVIRONMENT.
This map supercedes all previous editions.



Annual Mooring Grounds Blairgowrie

Healthy Parks
Healthy People

