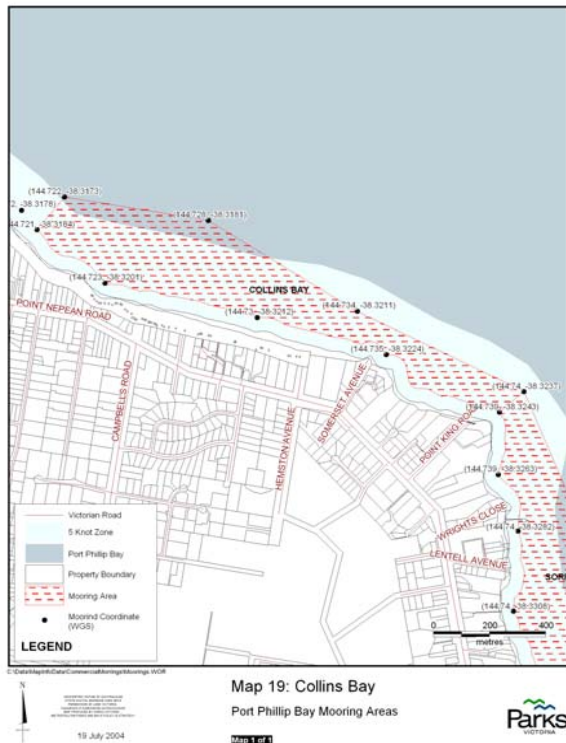


Annual Mooring Ground Information Collins Bay

Mooring Location	Collins Bay, Portsea
Set Aside Name	Collins Bay
Melways Reference	Page 156 J2
Boundaries	From Point Franklin through to Point King
Agent Managing	Parks Victoria
Status	Sites Available
Waiting List	NO
Local Features	Shelly's Beach
Public Moorings present	NO
Availability of Temporary Moorings	NO
Weather Conditions	Open Waters
Tackle Requirements	Buoys : Identification buoys are to be attached to the mooring at all times and the site identification number must be clearly visible. Buoys can either be polystyrene or plastic foam filled (minimum of 300mm diameter to a maximum of 500mm). Alternatively a 200mm manufactured stick buoy will be accepted.
	Chain : As per contractors specifications
	Weights : No ground weights permitted.

Tender Arrangements	Tenders (that service larger vessels on swing moorings), that are moored in shallow water or at an approved non-berthing section of a public jetty, are required to show the identification of the registered vessel on the outside structure of the tender vessel.
Access	Limited carparking available at Shelly's beach.
Contact:	Contact Parks Victoria on 13 19 63



Healthy Parks
Healthy People





Map Produced using Parks Victoria's ParkView Mapping System
 Date Produced: 20 June 2006

GEOCENTRIC DATUM OF AUSTRALIA – (GDA94)
 STATE DIGITAL MAPBASE USED WITH PERMISSION
 OF LAND VICTORIA,
 DEPARTMENT OF SUSTAINABILITY AND
 ENVIRONMENT.

This map supercedes all previous editions.



Annual Mooring Grounds
 Collins Bay

*Healthy Parks
 Healthy People*

