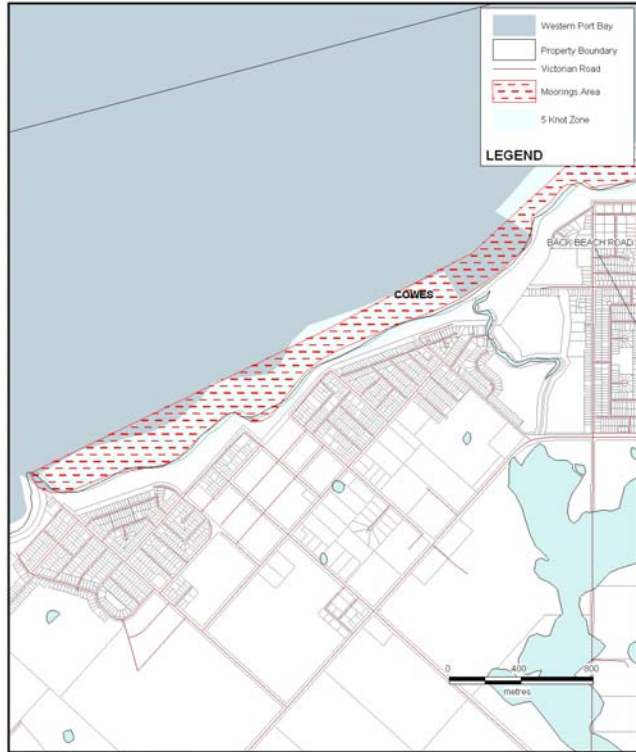


Annual Mooring Ground Information

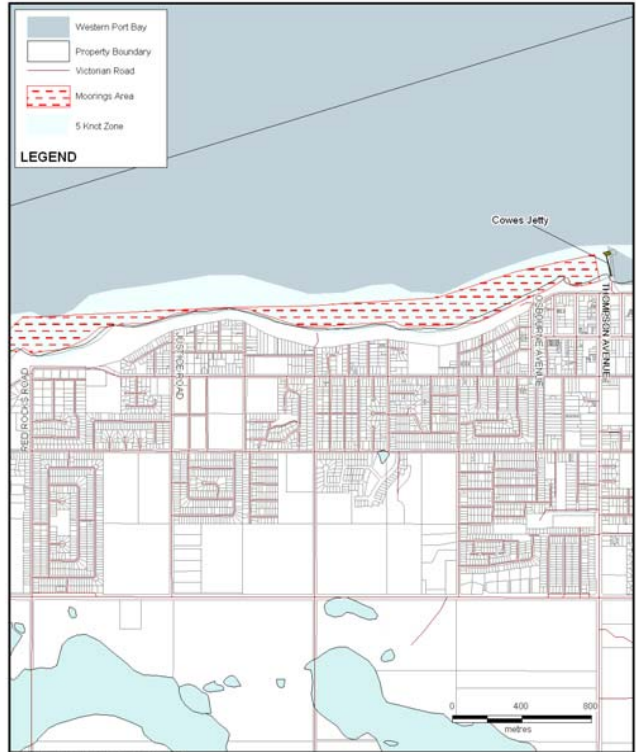
Cowes

Mooring Location	Cowes
Set Aside Name	Cowes
Melways Reference	Map 631
Boundaries	Complete 5 Knot Zone Silverleaves to McHaffies Light
Agent Managing	Parks Victoria
Status	Ample room in some areas
Waiting List	No
Local Features	East of the Cowes Jetty to the end of Silverleaves Estate. West of the Cowes Jetty to Mchaffies Light House
Public Moorings present	4 Public Swing Moorings are available for short term berthing for recreational boat userses Call 131963 Located at S 38 26.865 E 145 13.909 S 38 26.882 E 145 13.872 S 38 26.890 E 145 13.836 S 38 26.900 E 145 13.796
Availability of Temporary Moorings	No
Weather Conditions	Exposed to ESE and NNW wind direction protected from SSW AND W. Tidal range of up to three metres.
Tackle Requirements	Buoys : Identification buoys are to be attached to the mooring at all times and the site ID number must be clearly visible and marked on both buoys. Two buoys are required one being an inflatable type (orange in colour) of no less than 600mm in diameter with the other pick up buoy with handle attached to carry the ID tag. Chain : As specified by works contractor Weights : Ground weights permitted

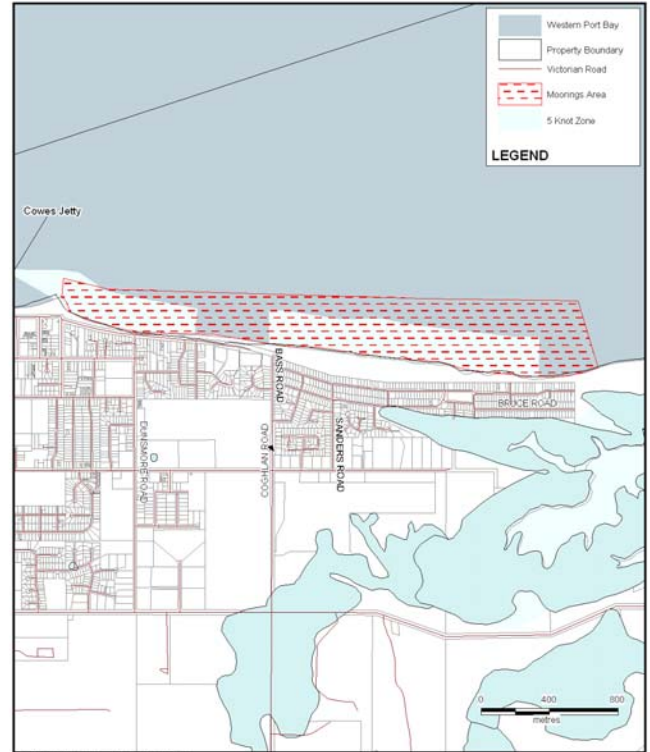
Tender Arrangements	Tenders not permitted to moor but can remain on mooring whilst mother vessel is at sea.
Access	Car parking along Esplanade at Cowes boat ramp access at Anderson Street
Contact:	Contact Parks Victoria on 13 19 63



Map 112a: Cowes
Western Port Bay Mooring Areas
9 August 2004
Map 1 of 3
Parks VICTORIA



Map 112b: Cowes
Western Port Bay Mooring Areas
9 August 2004
Map 2 of 3
Parks VICTORIA



Map 112c: Cowes
Western Port Bay Mooring Areas
9 August 2004
Map 3 of 3
Parks VICTORIA

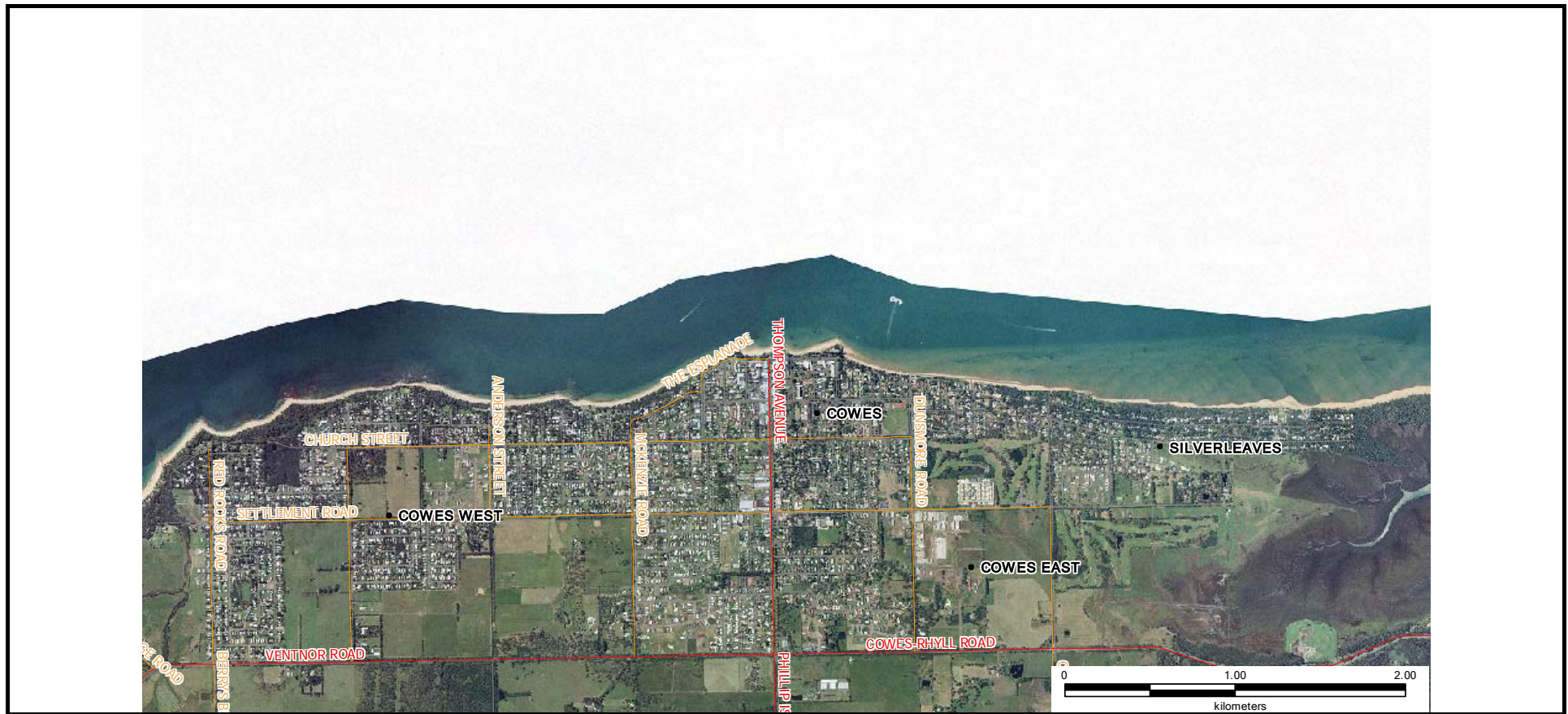
Healthy Parks
Healthy People





*Healthy Parks
Healthy People*





Map Produced using Parks Victoria's ParkView Mapping System
 Date Produced: 20 June 2006

GEOCENTRIC DATUM OF AUSTRALIA – (GDA94)
 STATE DIGITAL MAPBASE USED WITH PERMISSION
 OF LAND VICTORIA,
 DEPARTMENT OF SUSTAINABILITY AND
 ENVIRONMENT.

This map supercedes all previous editions.



Annual Mooring Grounds
 Cowes

Healthy Parks
 Healthy People

