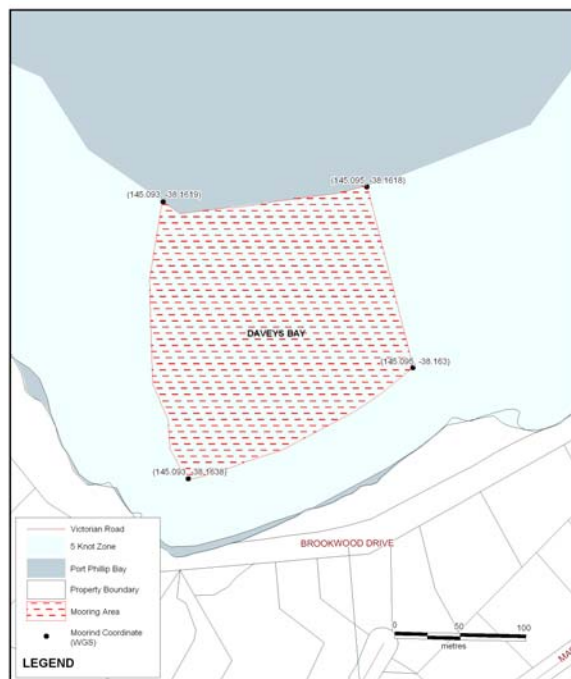


# Annual Mooring Ground Information

## Daveys Bay

<b>Mooring Location</b>	Daveys Bay
<b>Set Aside Name</b>	Daveys Bay, Mt Eliza
<b>Melways Reference</b>	Map 101 G7
<b>Boundaries</b>	Inside line of 5 knot buoys in Daveys Bay.
<b>Agent Managing</b>	Parks Victoria
<b>Status</b>	Sites Available
<b>Waiting List</b>	NO
<b>Local Features</b>	Daveys Bay Yacht Club
<b>Public Moorings present</b>	NO
<b>Availability of Temporary Moorings</b>	NO
<b>Weather Conditions</b>	Open water. Exposed to all winds especially N and W winds
<b>Tackle Requirements</b>	<b>Buoys</b> : Identification buoys are to be attached to the mooring at all times and the site identification number must be clearly visible. Buoys can either be polystyrene or plastic foam filled (minimum of 300mm diameter to a maximum of 500mm). Alternatively a 200mm manufactured stick buoy will be accepted.
	<b>Chain</b> : As specified by works contractor.
	<b>Weights</b> : No concrete ground weights permitted.
<b>Tender Arrangements</b>	Tenders (that service larger vessels on swing moorings), that are moored in shallow water or at an approved non-berthing section of a public jetty, are required to show the identification of the registered vessel on the outside structure of the

	tender vessel.
<b>Access</b>	Parking available within neighbouring streets. Boat access available at Liddesdale Ave, Frankston.
<b>Contact:</b>	Contact Parks Victoria 13 19 63.



**Healthy Parks**  
Healthy People





Map Produced using Parks Victoria's ParkView Mapping System  
Date Produced: 20 June 2006

**GEOCENTRIC DATUM OF AUSTRALIA – (GDA94)**

STATE DIGITAL MAPBASE USED WITH PERMISSION OF LAND VICTORIA, DEPARTMENT OF SUSTAINABILITY AND ENVIRONMENT.

This map supercedes all previous editions.



**Annual Mooring Grounds**  
Daveys Bay

**Healthy Parks**  
Healthy People

