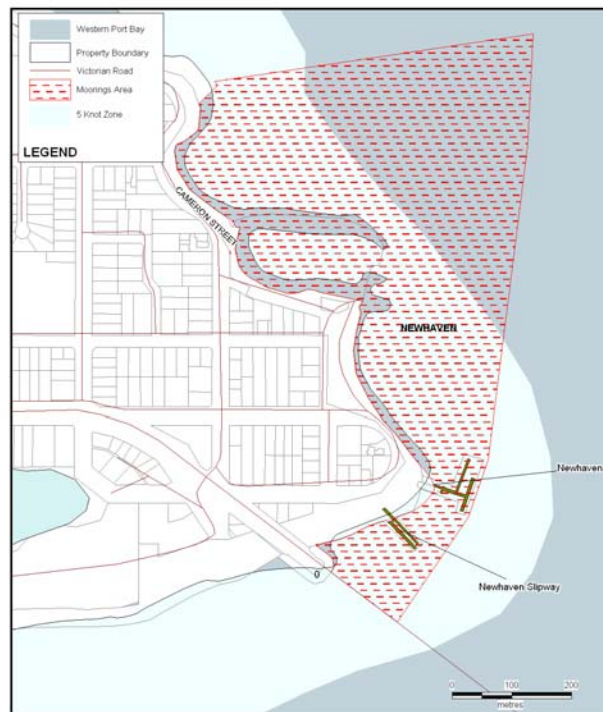


Annual Mooring Ground Information Newhaven

Mooring Location	Newhaven
Set Aside Name	Newhaven Boys Home channel
Melways Reference	Map 632 J7
Boundaries	Approximately 350m North of the entrance to the Newhaven Marina to a line boundary by the Phillip Island Bridge
Agent Managing	Parks Victoria
Status	Deep water sites available
Waiting List	No
Local Features	North of the Marina entrance past the Newhaven Jetty to the Bridge boundary
Public Moorings present	No
Availability of Temporary Moorings	No
Weather Conditions	Exposed to ESE and NNW wind direction protected from SW and W. Tidal range of up to three metres.
Tackle Requirements	Buoys : Identification buoys are to be attached to the mooring at all times and the site ID number must be clearly visible and marked on both buoys. Two buoys are required one being an inflatable type (orange in colour) of no less than 600mm in diameter with the other pick up buoy with handle attached to carry the ID tag.
	Chain : As specified by works contractor
	Weights : Ground weights permitted

Tender Arrangements	Tenders not permitted to moor but can remain on mooring whilst mother vessel is at sea.
Access	Boat ramp access opposite Marina Jetty access from Newhaven Jetty or boat ramp jetty
Contact:	Contact Parks Victoria on 13 19 63



Map 114: Newhaven
Western Port Bay Mooring Areas
9 August 2004
Map 2 of 2
Parks VICTORIA



Healthy Parks
Healthy People





Map Produced using Parks Victoria's ParkView Mapping System

Date Produced: 20 June 2006

GEOCENTRIC DATUM OF AUSTRALIA – (GDA94)
STATE DIGITAL MAPBASE USED WITH PERMISSION
OF LAND VICTORIA,
DEPARTMENT OF SUSTAINABILITY AND
ENVIRONMENT.

This map supercedes all previous editions.



Annual Mooring Grounds Newhaven

Healthy Parks
Healthy People

