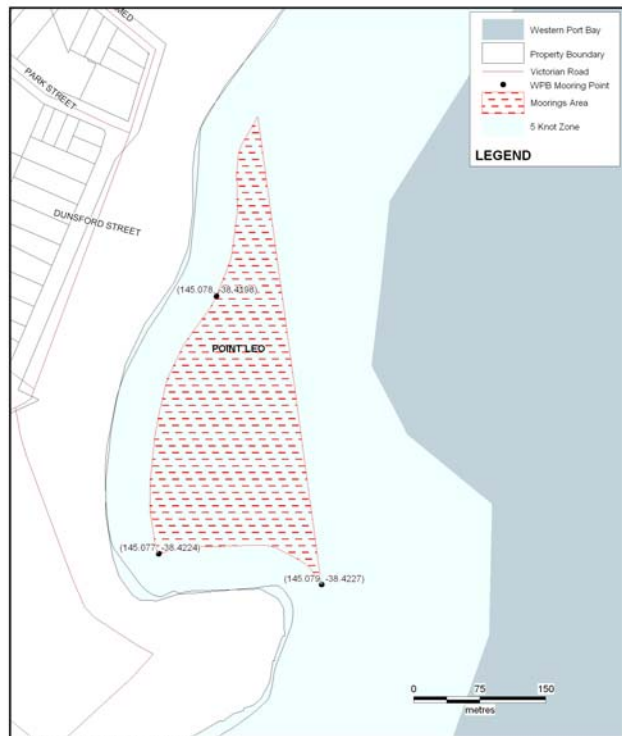


Annual Mooring Ground Information Pt Leo

Mooring Location	Pt Leo
Set Aside Name	Pt Leo
Melways Reference	Map 612 M10
Boundaries	An area commencing approximately 60 metres seaward from the foreshore in a Southerly direction extending approximately 500 metres parallel to the foreshore
Agent Managing	Parks Victoria
Status	Deep and shallow water sites available.
Waiting List	No
Local Features	No boat ramp access. Car parking available at foreshore area.
Public Moorings present	No
Availability of Temporary Moorings	No
Weather Conditions	Exposed to SSE. Sheltered waters NNW and SW winds.
Tackle Requirements	Buoys : Identification buoys are to be attached to the mooring at all times and the site ID number must be clearly visible and marked on both buoys. Two buoys are required one being an inflatable type (orange in colour) of no less than 600mm in diameter with the other pick up buoy with handle attached to carry the ID tag.
	Chain : As specified by works contractor
	Weights : Ground weights permitted

Tender Arrangements	Tenders not permitted to moor but can remain on mooring whilst mother vessel is at sea.
Access	No boat ramp access. Car parking available at foreshore area.
Contact:	Contact Parks Victoria on 13 19 63



© DataMapInfo/Dejar/CommercialMarineMooring/VICOR
 9 August 2004
Map 108: Point Leo
 Western Port Bay Mooring Areas
 Map 1 of 1
 Parks VICTORIA



Healthy Parks
 Healthy People





Map Produced using Parks Victoria's ParkView Mapping System
 Date Produced: 20 June 2006

GEOCENTRIC DATUM OF AUSTRALIA – (GDA94)
 STATE DIGITAL MAPBASE USED WITH PERMISSION
 OF LAND VICTORIA,
 DEPARTMENT OF SUSTAINABILITY AND
 ENVIRONMENT.

This map supercedes all previous editions.



Annual Mooring Grounds
 Pt Leo

Healthy Parks
Healthy People

