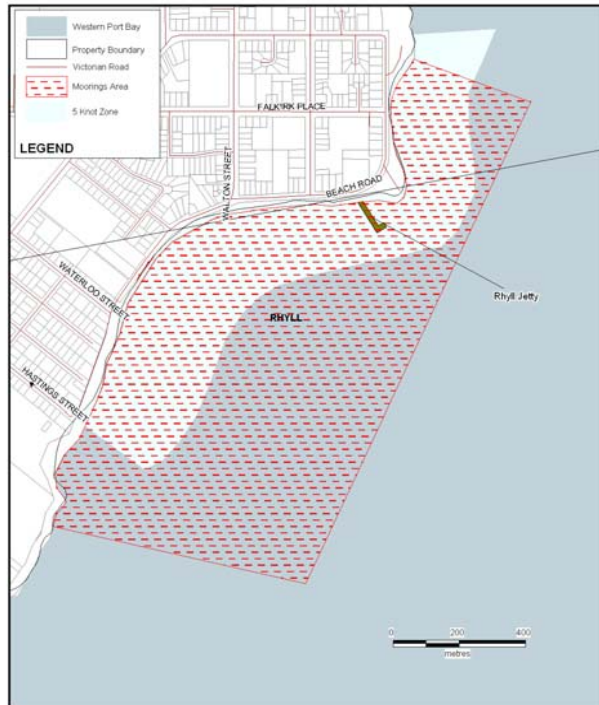


# Annual Mooring Ground Information

## Rhyll

<b>Mooring Location</b>	Rhyll
<b>Set Aside Name</b>	Rhyll
<b>Melways Reference</b>	Map 632
<b>Boundaries</b>	Complete 5 Knot Zone Area of Rhyll inlet
<b>Agent Managing</b>	Parks Victoria
<b>Status</b>	No deep water sites available some mud mooring site available
<b>Waiting List</b>	No
<b>Local Features</b>	Rhyll channel area from entrance light to the end of the Rhyll gutter towards Swan Bay
<b>Public Moorings present</b>	No
<b>Availability of Temporary Moorings</b>	No
<b>Weather Conditions</b>	Exposed to ESE and SW wind direction protected from N and NW. Tidal range of up to three metres.
<b>Tackle Requirements</b>	<b>Buoys</b> : Identification buoys are to be attached to the mooring at all times and the site ID number must be clearly visible and marked on both buoys. Two buoys are required one being an inflatable type (orange in colour) of no less than 600mm in diameter with the other pick up buoy with handle attached to carry the ID tag.
	<b>Chain</b> : As specified by works contractor
	<b>Weights</b> : Ground weights permitted

<b>Tender Arrangements</b>	Tenders not permitted to moor but can remain on mooring whilst mother vessel is at sea.
<b>Access</b>	Car parking along Esplanade boat ramp access opposite Phillip Island Marine. Jetty access from Rhyll jetty or boat ramp jetty
<b>Contact:</b>	Contact Parks Victoria on 13 19 63



© Crown in Right of the State of Victoria  
 9 August 2004

Map 113: Rhyll  
 Western Port Bay Mooring Areas  
 Map 2 of 2



**Healthy Parks**  
 Healthy People





Map Produced using Parks Victoria's ParkView Mapping System  
 Date Produced: 20 June 2006

**GEOCENTRIC DATUM OF AUSTRALIA – (GDA94)**  
 STATE DIGITAL MAPBASE USED WITH PERMISSION  
 OF LAND VICTORIA,  
 DEPARTMENT OF SUSTAINABILITY AND  
 ENVIRONMENT.  
 This map supercedes all previous editions.



**Annual Mooring Grounds**  
 Rhyll

**Healthy Parks**  
 Healthy People

