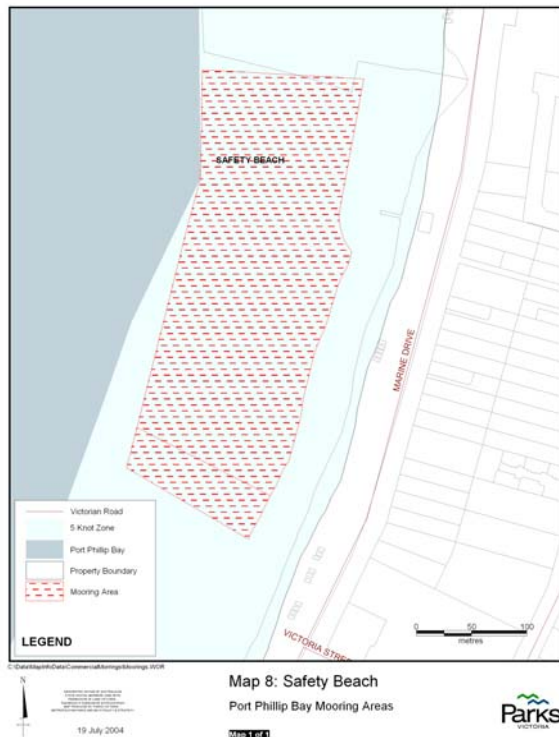


# Annual Mooring Ground Information Safety Beach

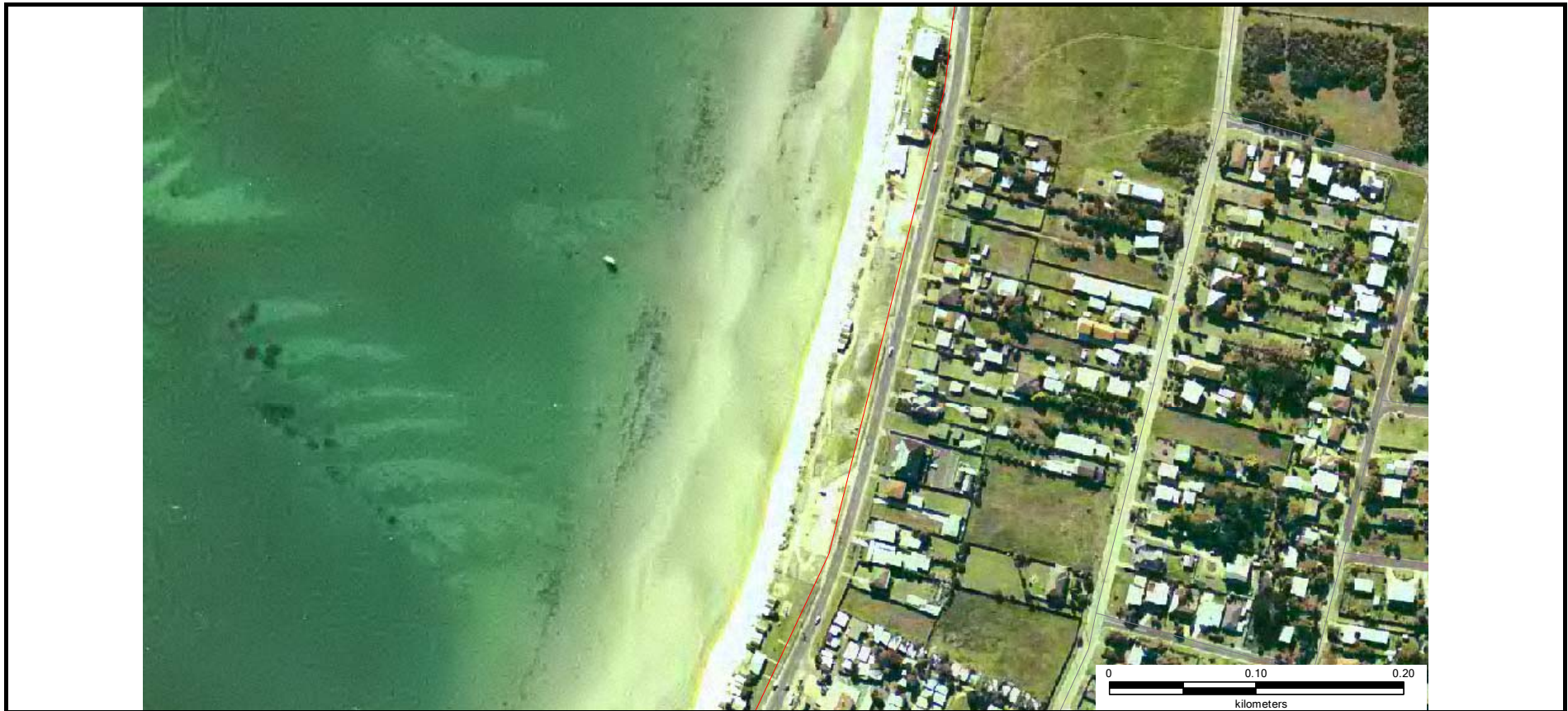
<b>Mooring Location</b>	Safety Beach
<b>Set Aside Name</b>	Safety Beach
<b>Melways Reference</b>	Map 150 D11
<b>Boundaries</b>	50 Meters north of the Australian Volunteer Coastguard to 50 meters south of the Safety Beach Sailing Club.
<b>Agent Managing</b>	Parks Victoria
<b>Status</b>	Swing mooring sites available
<b>Waiting List</b>	No
<b>Local Features</b>	Safety beach boat ramp located to the sites south, Australian Volunteer Coastguard and Safety Beach Sailing Club located on boundaries of mooring ground. Safety beach Marina located to the mooring ground's north.
<b>Public Moorings present</b>	NO
<b>Availability of Temporary Moorings</b>	NO
<b>Weather Conditions</b>	Exposed to NW winds
<b>Tackle Requirements</b>	<b>Buoys</b> : Identification buoys are to be attached to the mooring at all times and the site identification number must be clearly visible. Buoys can either be polystyrene or plastic foam filled (minimum of 300mm diameter to a maximum of 500mm). Alternatively a 200mm manufactured stick buoy will be accepted.
	<b>Chain</b> : As specified by works contractor.
	<b>Weights</b> : No concrete ground weights permitted.

<b>Tender Arrangements</b>	Tenders (that service larger vessels on swing moorings), that are moored in shallow water or at an approved non-berthing section of a public jetty, are required to show the identification of the registered vessel on the outside structure of the tender vessel.
<b>Access</b>	Parking available along Marine Drive with many car parks present in close proximity to the Safety Beach boat ramp. Boat access via the Safety Beach boat ramp.
<b>Contact:</b>	Contact Parks Victoria on 13 19 63



**Healthy Parks**  
Healthy People





Map Produced using Parks Victoria's ParkView Mapping System  
Date Produced: 20 June 2006

**GEOCENTRIC DATUM OF AUSTRALIA – (GDA94)**

STATE DIGITAL MAPBASE USED WITH PERMISSION OF LAND VICTORIA, DEPARTMENT OF SUSTAINABILITY AND ENVIRONMENT.

This map supercedes all previous editions.



**Annual Mooring Grounds**  
Safety Beach

**Healthy Parks**  
Healthy People

