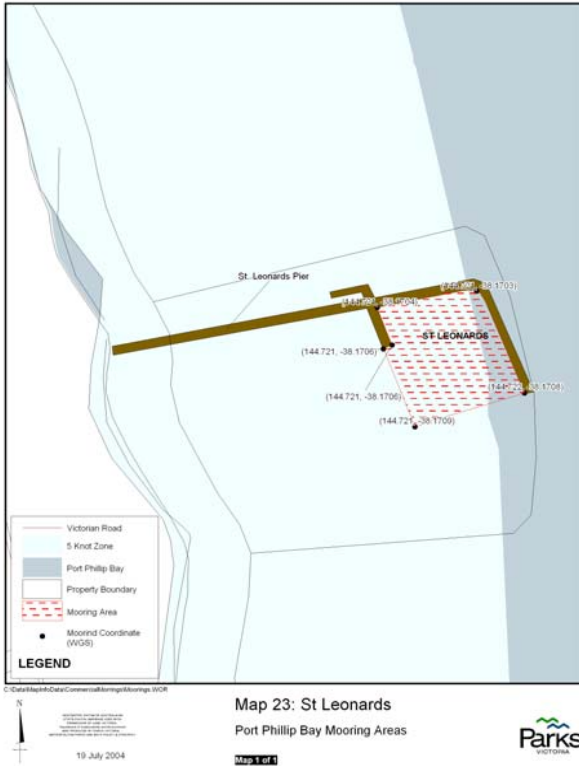


Annual Mooring Ground Information St Leonards

Mooring Location	St Leonards Harbour
Set Aside Name	St Leonards
Melways Reference	Edition 31 2004 Map 460 C 9
Boundaries	Contact Parks Victoria for GPS Co Ordinates to the mooring grounds boundaries.
Agent Managing	Parks Victoria
Status	No sites available
Waiting List	NO
Local Features	St Leonards Pier, No Boating Zone to the north of St Leonards Pier.
Public Moorings present	NO
Availability of Temporary Moorings	Nil
Weather Conditions	Open Water wind from North, South and East. Protected from West
Tackle Requirements	Buoys : As specified by works contractor according to the Parks Victoria specifications for the area.
	Chain : As specified by works contractor according to the Parks Victoria specifications for the area.
	Weights : concrete or train wheel permitted as per contractor specifications.
Tender Arrangements	Tenders permitted to moor on inner side of outer pier.

Access	Access by car via Murradoc Rd. Boat access can be obtained via the St Leonards four lane boat ramp located to the south of the mooring ground.
Contact:	Contact Parks Victoria on 13 19 63.



Healthy Parks
Healthy People





Map Produced using Parks Victoria's ParkView Mapping System
 Date Produced: 20 June 2006

GEOCENTRIC DATUM OF AUSTRALIA – (GDA94)
 STATE DIGITAL MAPBASE USED WITH PERMISSION OF
 LAND VICTORIA,
 DEPARTMENT OF SUSTAINABILITY AND ENVIRONMENT.
 This map supercedes all previous editions.



Annual Mooring Grounds
 St Leonards

Healthy Parks
 Healthy People

