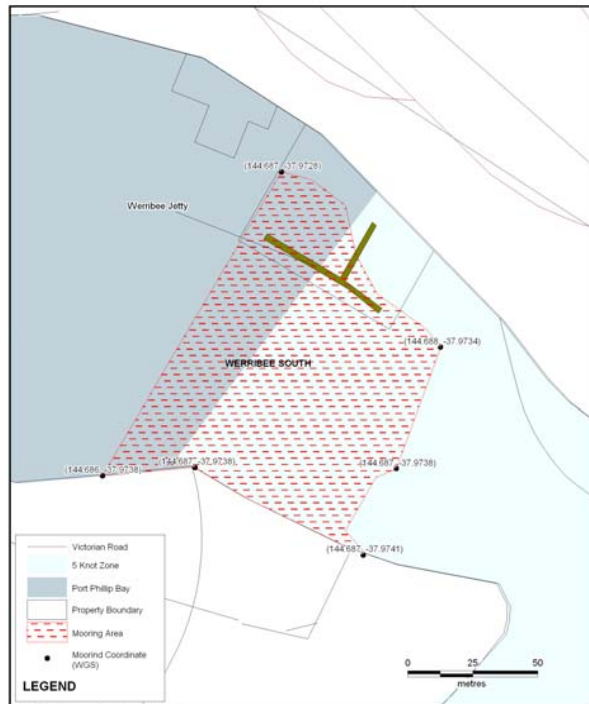


Annual Mooring Ground Information Werribee River

Mooring Location	Werribee River
Set Aside Name	Werribee River
Melways Reference	Map 209 / E11
Boundaries	30 meters upstream from Werribee South Boat ramp.
Agent Managing	Parks Victoria
Status	Sites available
Waiting List	NO
Local Features	Werribee Coastguard manage the boat launching facility. Werribee South Jetty is located South of the of the boat ramp short term berthing is available and is popular for fishing. Public toilets and shower facilities are available.
Public Moorings present	NO
Availability of Temporary Moorings	NO
Weather Conditions	Location provides good sheltered water from most weather conditions. Tide range 1.2 meters. River can flood in certain weather conditions.
Tackle Requirements	Buoys : Buoys to be attached and identification tags visible.
	Chain : To be suitable for size and weight of vessel.
	Weights : train wheels

Tender Arrangements	Tender mooring area is located upstream from boat ramp on pile moorings in shallow water on the eastern side of the river. Tender vessel is to have main vessel registration number visible.
Access	Car / trailer parking is provided at boat launching facility.
Contact:	Contact Parks Victoria on 13 19 63.



Map 34: Werribee South
Port Phillip Bay Mooring Areas
19 July 2004
Map 1.cdf
Parks VICTORIA



Healthy Parks
Healthy People





Map Produced using Parks Victoria's ParkView
Mapping System
Date Produced: 20 June 2006

GEOCENTRIC DATUM OF AUSTRALIA – (GDA94)
STATE DIGITAL MAPBASE USED WITH PERMISSION
OF LAND VICTORIA,
DEPARTMENT OF SUSTAINABILITY AND
ENVIRONMENT.

This map supercedes all previous editions.



Annual Mooring Grounds Werribee River

Healthy Parks
Healthy People

